



Craving love? Enduring grief activates brain's reward center

Mary-Frances O'Connor^{a,*}, David K. Wellisch^b, Annette L. Stanton^{a,b,c}, Naomi I. Eisenberger^c, Michael R. Irwin^a, Matthew D. Lieberman^c

^a Cousins Center for Psychoneuroimmunology, Semel Institute for Neuroscience and Human Behavior, University of California at Los Angeles, USA

^b Department of Psychiatry, Semel Institute for Neuroscience, University of California at Los Angeles, USA

^c Department of Psychology, University of California at Los Angeles, USA

ARTICLE INFO

Article history:

Received 10 January 2008

Revised 8 April 2008

Accepted 29 April 2008

Available online 10 May 2008

ABSTRACT

Complicated Grief (CG) occurs when an individual experiences prolonged, unabated grief. The neural mechanisms distinguishing CG from Noncomplicated Grief (NCG) are unclear, but hypothesized mechanisms include both pain-related activity (related to the social pain of loss) and reward-related activity (related to attachment behavior). Bereaved women (11 CG, 12 NCG) participated in an event-related functional magnetic resonance imaging scan, during grief elicitation with idiographic stimuli. Analyses revealed that whereas both CG and NCG participants showed pain-related neural activity in response to reminders of the deceased, only those with CG showed reward-related activity in the nucleus accumbens (NA). This NA cluster was positively correlated with self-reported yearning, but not with time since death, participant age, or positive/negative affect. This study supports the hypothesis that attachment activates reward pathways. For those with CG, reminders of the deceased still activate neural reward activity, which may interfere with adapting to the loss in the present.

© 2008 Elsevier Inc. All rights reserved.

There is no pain so great as the memory of joy in present grief.
~Aeschylus, founder of Greek tragedy

Introduction

Grief is one of life's most painful experiences. When suffering the loss of a loved one, one can feel as if the attendant sadness and longing will last indefinitely. Although successful adaptation to the loss is the most frequent response (Bonnano et al., 2002), grief does not abate in a substantial minority; rather, it develops into Complicated Grief (CG) (Ott et al., 2007). CG, previously known as chronic, pathological or traumatic grief, includes debilitating recurrent pangs of painful emotions, with intense yearning, longing and searching for the deceased, and preoccupation with thoughts of the loved one. This syndrome has now been defined by an empirically-derived set of criteria (Boelen and van den Bout, 2005) and is being considered for inclusion in the DSM-V.

The neurocognitive mechanisms involved in CG are currently unknown. Some have hypothesized that attachment may activate reward pathways and that this neural response may have addiction-like properties (Insel, 2003; Panksepp et al., 2002). We hypothesize that a major neurocognitive difference

between CG and Noncomplicated Grief (NCG) is that reminders of the deceased may still activate neural rewards for those with CG. This reward activation may interfere with adapting to the loss in the present. Supporting this idea are subjective reports from CG patients indicating pleasurable reveries about the lost love (during which the reality of the loss is ignored) in addition to painful yearning (Shear et al., 2005). These self-report findings suggest the involvement of both reward and pain networks.

The nucleus accumbens (NA) is the region most commonly associated with reward (Knutson et al., 2001). NA has also been shown to play a role in social attachment, such as sibling and maternal affiliation, via neurotransmitters and peptides (e.g., dopamine and oxytocin) (Young et al., 2001). The pain network, by contrast, including the dorsal anterior cingulate cortex (dACC), insula, and periaqueductal gray (PAG) has been previously implicated in both physical (Rainville, 2002) and social pain (Eisenberger et al., 2003; Rainville, 2002). The present analysis specifically investigates whether the CG group had greater activity occur in the brain's reward or pain networks than the NCG group.

Methods and materials

Participants

Women (11 CG, 12 NCG) who had experienced the death of a mother or sister to breast cancer in the past 5 years were

* Corresponding author. Fax: (310) 794-9247.

E-mail address: mfoconnor@mednet.ucla.edu (M.-F. O'Connor).

recruited to participate in an event-related fMRI study. Participants were recruited from a clinic for women at familial risk of breast cancer and from the community. Sixty-four persons were screened by telephone, and 35 had an initial interview. Participants were excluded for current Axis I disorder (including major depression), as evidenced by a structured clinical interview (Spitzer et al., 1994). CG was diagnosed in a structured clinical interview (Prigerson and Jacobs, 2001) using empirically-derived criteria. The mean age of participants was 43.70 (SD=10.00), they had an average of 16.57 (SD=2.35) years of school and 78.26% were white. The two groups did not differ on any demographic characteristics as assessed by ANOVA and chi-square analyses. The Institutional Review Board at UCLA approved the study and all participants gave written informed consent.

Procedure

Each participant provided a photograph of her deceased loved one and these photos were matched with photos of a stranger. Participants also shared an autobiographical narrative of the death event and 15 grief-related idiographic words were chosen from it. These words were matched for part of speech, number of letters and frequency of usage in the English language with 15 neutral words. These photos and words were made into 60 composites (Fig. 1), each consisting of one picture (deceased or stranger) and one word (grief-related or neutral). Empirical support for the grief-eliciting task has been shown previously using both skin conductance methodology and participants' subjective reports (Gündel et al., 2003). Participants viewed composites through goggles in randomized order. Each participant was given the same set of instructions: "Focus on any thoughts, feelings or memories you have to the combination of the picture and the word on the slide. Let yourself respond emotionally to each slide by being aware of your feelings without trying to alter them".

fMRI methodology

Data were acquired on a Siemens Allegra 3T scanner. For each participant, a high-resolution structural T2-weighted echo-planar image (spin-echo; TR=5000 ms; TE=33 ms; matrix size 128×128; 36 axial slices; FOV=20 cm; 3-mm thick, skip 1-mm) was acquired coplanar with the functional scan. A functional scan, lasting 5 min and 30 s, was acquired



Fig. 1. Example of picture/word composites presented to subject.

(echo-planar T2*-weighted gradient-echo, TR=2500 ms, TE=25 ms, flip angle=90, matrix size 64×64, 36 axial slices, FOV=20 cm; 3-mm thick, skip 1-mm).

The imaging data were analyzed using statistical parametric mapping (SPM'99; Wellcome Department of Cognitive Neurology, Institute of Neurology, London, UK). Images were realigned, normalized, and smoothed with an 8 mm Gaussian kernel, full width at half maximum. Analysis used the general linear model in an event-related analysis. Effects at each voxel were estimated using linear contrasts to compare regionally specific effects. The contrasts for the individual subjects were aggregated for single-group analysis and for between-group analysis according to the random effect model in SPM. All group comparison analyses (e.g., CG>NCG) were thresholded using an uncorrected *p*-value of .005 combined with a cluster size threshold of 10 voxels. Where indicated, parameter estimates were extracted from group comparisons and reported for each group separately. All coordinates are reported in MNI format.

Results

Reward activation

Greater reward-related activity occurred in the CG relative to the NCG individuals. Notably, the NA ($x=10, y=20, z=-6$; Fig. 2A) was the only region of the brain that was more active in response to grief-related words than neutral words among those with CG compared to NCG ($t=3.51, p<0.001, 15$ voxels). Parameter estimates were extracted from this region and reported separately for each group as shown in Fig. 2B. CG individuals produced increased NA activity in response to grief words ($t=3.36, p<.01$), whereas the NCG individuals did not ($t=-1.82, p<.10$). A comparison of the deceased and stranger photos did not produce NA activity. This may have been due to habituation effects as 15 different grief words were used, but only a single deceased photograph was shown repeatedly. To examine this possibility, we compared deceased and stranger photos from the first third of the trials only in order to isolate pre-habituation activity. Here, as in the grief word comparison, there was greater activation in the NA ($x=-14, y=4, z=-16$) for the CG group than the NCG group ($t=3.68, p<.001, 18$ voxels).

Yearning

To clarify the functional role of NA activity in grief, correlational analyses were performed with parameter estimates of activity from the observed cluster (10, 20, -6). Greater NA activation in the grief word comparison correlated significantly with more self-reported yearning for the deceased ($r=.42, p<.05$) (Fig. 3). No correlation was observed between NA activation and length of time since the death, participant age, or general positive or negative affect. Similarly, the NA activation observed during the early trials of the deceased photo comparison was also associated with yearning ($r=.36, p<.05$), and was not correlated with length of time since the death, participant age, or general positive or negative affect.

Pain network activation

To examine pain-related neural activity, we examined: a) whether each group showed neural activity in three regions previously linked to pain processes (anterior cingulate cortex

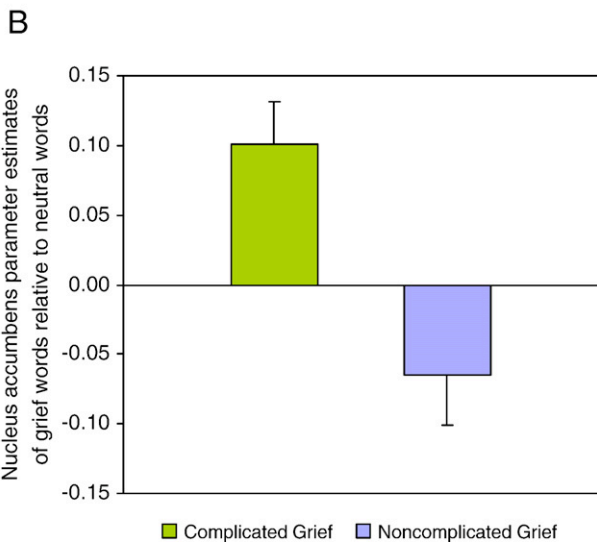
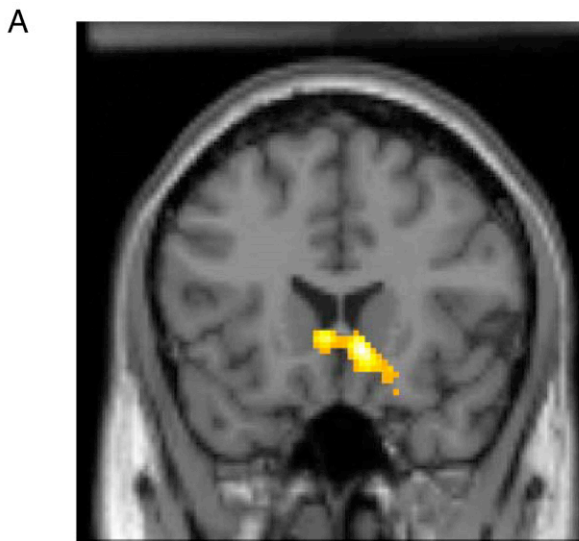


Fig. 2. A) Nucleus accumbens activity (10, 20, -6) in response to grief-related vs. neutral words that was significantly greater in the Complicated Grief group compared to the Noncomplicated Grief group (pictured at $p < .05$). B) Bar graph showing nucleus accumbens activity (10, 20, -6) in response to grief-related vs. neutral words for those with Complicated and Noncomplicated Grief.

(ACC), insula, periaqueductal gray (PAG) (Peyron et al., 2000)); and b) whether there were significant differences between the groups in pain-related neural activity in those regions ($p < .005$, 10 voxels). If one group showed significant activation in a region ($p < .005$, 10 voxels), we reported the activation from that same coordinate in the other group (Table 1). Each group showed significant activity in pain-related regions (dACC, insula, PAG) in the comparisons of the deceased vs. stranger pictures and grief vs. neutral words (Table 1), as has been previously shown in NCG (Gündel et al., 2003). The only activity in pain-related regions that differed between groups was in the left insula ($x = -34, y = 14, z = 18$), which was more active in the NCG group during the viewing of grief-related vs. neutral words ($t = 4.20, p < 0.001, 87$ voxels).

Discussion

Two models of grief have been hypothesized: a detachment model and a reunion model (Bowlby, 1980). In the detachment

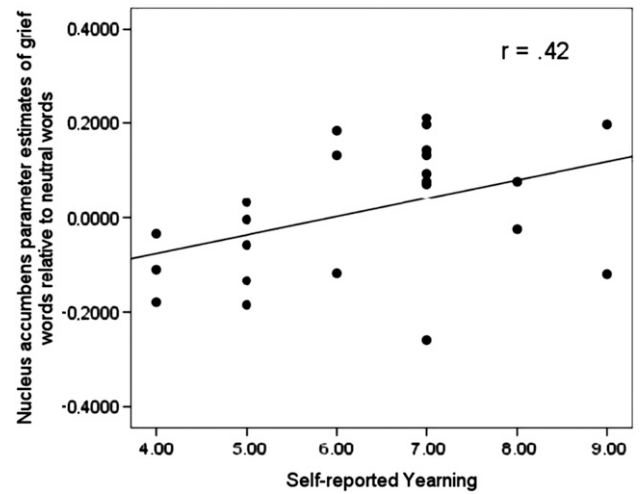


Fig. 3. Positive correlation between self-reported yearning and BOLD activity in the NA (10, 20, -6; $N = 23$) for each subject.

model, the grief emotion is believed to play a role in the acceptance of the reality of the death and therefore assist in recovery from the loss. In the reunion model, the grief is a form of protest against the separation from the deceased, and serves to promote reunion with the lost person, not detachment. After the death, cues of the deceased (such as memories, photos, etc.) persist, triggering yearning and grief. Coping with these salient cues is a major task in adjusting to the death (Freed and Mann, 2007). Freed and Mann hypothesize that if the detachment model is correct, the pangs of grief would occur with reduced NA activity over time, as the salience of the cues

Table 1

Effects in three regions of the pain network for both CG ($N = 11$) and NCG ($N = 12$) in response to pictures of the deceased and grief-related words

Region	Group	MNI coordinates (x,y,z)	T	p-value (voxels)
<i>Grief-related > neutral (words):</i>				
ACC	NCG	-2 34 8	5.12	0.001 (140)
	CG	-2 34 8	2.74	0.02
Insula	NCG	-36 18 18	4.73	0.001 (44)
	CG	- - -	-	-
PAG	NCG	- - -	-	-
	CG	- - -	-	-
<i>Deceased > stranger (pictures)</i>				
dACC	NCG	-2 24 24	4.17	0.001 (309)
	CG	-2 24 24	1.87	0.05
Insula	NCG	-40 8 -2	4.76	0.001 (235)
		48 10 0	4.47	0.001 (277)
	CG	-40 8 -2	1.70	0.02
		48 10 0	2.31	0.03
PAG	NCG	-10 -18 -16	9.74	0.0001 (55)
	CG	-10 -18 -16	2.37	0.02

Significant activations in one group ($p < .005$, 10 voxels) were examined and reported for the other group. T and p-values are listed for each group separately. Cluster sizes were determined at the threshold of .005, 10 voxels (if the significance did not reach this threshold, cluster sizes were not comparable and therefore not listed). dACC = dorsal anterior cingulate cortex, PAG = periaqueductal gray.

decreases and acceptance of the reality leads to detachment. If the reunion model is correct, then the pangs of grief would continue to occur with NA activity, with reward activity in response to the cues motivating reunion with the deceased. This study demonstrates that each of these models may be accurate for distinct subgroups of bereaved individuals: relative to non-grief-eliciting stimuli, those with CG produced significant NA activations, whereas those with NCG produced NA reductions during grief elicitation.

Findings suggest that both CG and NCG groups may have felt pain upon presentation of grief-related stimuli, but only those with CG also activated an area important for reward processing when viewing cues of the deceased. The association between NA activity and yearning, but not time since death, participant age, or positive/negative affect provides convergent and discriminative validity. The addiction-relevant aspect of this neural response (Knutson et al., 2001) may help to explain why it is hard to resist engaging in pleasurable reveries about the deceased even though engaging in these reveries may prevent those with CG from adjusting to the realities of the present. Many who suffer from addiction-like disorders experience them as afflictions; similarly we are not suggesting that reveries about the deceased are emotionally satisfying, but rather may serve as craving responses that may make adapting to the reality of the loss more difficult.

Prior work has demonstrated a relationship between autonomic arousal and posterior cingulate (PCC) activity during grief elicitation (O'Connor et al., 2007). O'Connor et al. hypothesized a role for PCC in those with CG, given that those with CG may have greater arousal. However, there were no significant differences in PCC activity between the NCG and CG groups in the present study. Future work is needed to more carefully explore whether the PCC plays a role in CG in a larger sample. In addition, connectivity analyses in the prior study showed that PCC activation was associated with subgenual ACC activation. Similarly, future studies should investigate connectivity between NA and prefrontal or limbic regions important in emotion regulation.

Understanding the reward processes activated in those with CG could substantially change treatment of this disorder. Therapies such as behavioral interventions that target reward processes may confer benefit and preferentially aid in adapting to the loss (Shear et al., 2005). Likewise, dopaminergic interventions that alter reward sensitivity could theoretically be more effective in treating CG than serotonergic interventions, which have failed to alter grief intensity (Zygmunt et al., 1998).

Addressing the continued craving of past relationships may assist those with CG in adapting to the loss.

Acknowledgments

We would like to thank the UCLA Brain Mapping Center for their assistance. This research was supported by funds from the California Breast Cancer Research Program Grant Number 10IB-0048. This work was also supported in part by grant T32-MH19925, the Cousins Center for Psychoneuroimmunology and the Friends of the Semel Institute for Neuroscience and Human Behavior.

References

- Boelen, P.A., van den Bout, J., 2005. Complicated grief, depression, and anxiety as distinct postloss syndromes: a confirmatory factor analysis study. *Am. J. Psychiatry* 162 (11), 2175–2177.
- Bonnano, G.A., Wortman, C.B., Lehman, D.R., Tweed, R.G., Haring, M., Sonnega, J., et al., 2002. Resilience to loss and chronic grief: a prospective study from preloss to 18-months postloss. *J. Pers. Soc. Psychol.* 83 (5), 1150–1164.
- Bowlby, J., 1980. Attachment and loss. *Loss, Sadness and Depression*, vol 3. Basic Books, New York.
- Eisenberger, N.I., Lieberman, M.D., Williams, K.D., 2003. Does rejection hurt? An fMRI study of social exclusion. *Science* 302 (5643), 290–292.
- Freed, P.J., Mann, J.J., 2007. Sadness and loss: Toward a neurobiopsychosocial model. *Am. J. Psych.* 164 (1), 28–34.
- Gündel, H., O'Connor, M.-F., Littrell, L., Fort, C., Lane, R.D., 2003. Functional neuroanatomy of grief: an fMRI study. *Am. J. Psychiatry* 160 (11), 1946–1953.
- Insel, T.R., 2003. Is social attachment an addictive disorder? *Physiol. Behav.* 79 (3), 351.
- Knutson, B., Adams, C.M., Fong, G.W., Hommer, D., 2001. Anticipation of increasing monetary reward selectively recruits nucleus accumbens. *J. Neurosci.* 21 (16) RC159.
- O'Connor, M.-F., Gündel, H., McRae, K., Lane, R.D., 2007. Functional neuroanatomical correlates of emotional arousal during grief. *Neuropsychopharmacology* 32, 2184–2189.
- Ott, C.H., Lueger, R.J., Kelber, S.T., Prigerson, H.G., 2007. Spousal bereavement in older adults: common, resilient, and chronic grief with defining characteristics. *J. Nerv. Ment. Disord.* 195 (4), 332–341.
- Panksepp, J., Knutson, B., Burgdorf, J., 2002. The role of brain emotional systems in addictions: a neuro-evolutionary perspective and new “self-report” animal model. *Addiction* 97 (4), 459–469.
- Peyron, R., Laurent, B., Garcia-Larrea, L., 2000. Functional imaging of brain responses to pain. A review and meta-analysis. *Clin. Neurophysiol.* 30 (5), 263–288.
- Prigerson, H.G., Jacobs, S.C., 2001. Traumatic grief as a distinct disorder: a rationale, consensus criteria, and preliminary empirical test. In: Stroebe, M.S., Hansson, R.O., Stroebe, W., Schut, H. (Eds.), *Handbook of Bereavement Research: Consequences, Coping and Care*. American Psychological Association, Washington, D.C., pp. 613–645.
- Rainville, P., 2002. Brain mechanisms of pain affect and pain modulation. *Curr. Opin. Neurobiol.* 12 (2), 195.
- Shear, K., Frank, E., Houck, P.R., Reynolds III, C.F., 2005. Treatment of complicated grief: a randomized controlled trial. *J. Am. Med. Assoc.* 293 (21), 2601–2608.
- Spitzer, R.L., Williams, J.B.W., Gibbons, M., First, M.D., 1994. *Structured Clinical Interview of the DSM-IV*. American Psychiatric Press, Washington, DC.
- Young, L.J., Lim, M.M., Gingrich, B., Insel, T.R., 2001. Cellular mechanisms of social attachment. *Horm. Behav.* 40 (2), 133–138.
- Zygmunt, M., Prigerson, H., Houck, P., Miller, M., Shear, M., Jacobs, S., et al., 1998. A post hoc comparison of paroxetine and nortriptyline for symptoms of traumatic grief. *J. Clin. Psychiatry* 59 (5), 241–245.